



Our People

Customer Services - Available on 0800 222 388



Sarah Earle (Left)

Sarah is well versed in our CRM and also ARLO, to be able to assist with eLearning queries as well



Liam McGeady

Liam works in our CRM and is able to assist with any face to face booking queries



Sharleena Wilson

Sharleena works in our CRM and is able to assist with any face to face booking queries

eLearning Team - Available on 0800 222 388



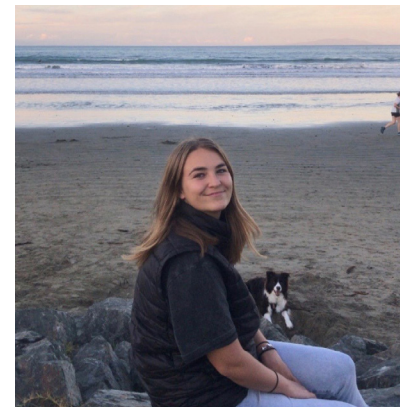
Jane Horwood

Jane is our online guru, and is able to assist you with any eLearning / online course queries



Toalima Ake

Toalima works within the eLearning team and is also available to assist with eLearning courses



Rebekah Lowe

Rebekah, our customer service team leader, she was previously a customer service team member and has a wealth of knowledge, as well as being able to assist with online queries.

Customer Service Team Leader

Key Accounts



Lee Dannhauser

Lee is our Key Accounts Manager and assists our customer service team.

Sales/ Marketing Support



Amy Lear

Amy, Our Sales and Marketing Team Leader is available to assist with any query you may have.



Shivani (Shivi) Deo

Shivi is our Sales and Marketing Support Representative and is available to assist with any queries you may have.

Business Development Managers



Sheryl Jones

Sheryl is our BDM for Auckland (South and East).

Sheryl has many years of service at SNA under her belt.



Steve Wilton

Steve is our BDM for Auckland (North and West) and has been with Safety 'n Action for almost 2 years.



Alex Meaclem

Alex is our new BDM for Christchurch. She has come across from Group to assist us.



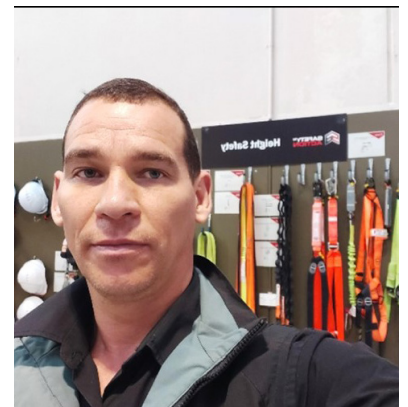
Paul Benjamin

Paul is our Dunedin / Invercargill BDM.



Jacqui Henderson

Jacqui is our new Waikato BDM who will be taking over from Hiren.



William Lightfoot

William is our hybrid BDM / trainer for the Bay of Plenty

Marketing Assistant



Daniel Bowey

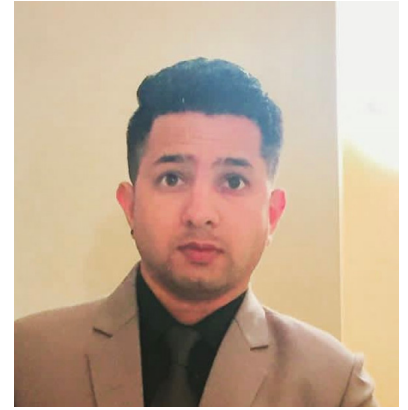
Dan is Marie's marketing assistant for Group, and he assists with lots of marketing project for Safety 'n Action

Inside Sales - Available on our mobiles



Vina Naidoo

Vina is our Inside Sales Champion for Northland, Waikato, New Plymouth, Taranaki. Wellington, Hawkes Bay and Bay of Plenty



Varun Mehta

Varun is our Inside Sales Champion for Auckland, Nelson, Dunedin, Invercargill and Christchurch

Processing - Available on the 0800 number



Jo Heslewood

Jo is the Processing team leader, with may years of service at Safety 'n Action and is available to assist with processing queries.



Verity Sutcliffe

Verity is one of our processing administrators and can assist with processing queries



Sharon McDougall

Sharon is one of our processing administrators and can assist with processing queries

Accounts Team - Available on the 0800



Sandra DeGraaff

Accounts Receivables



Ting Cheng

Accounts Payables



Roni George

Accounts Payables

Tech Team

Scheduling / Operations



Tracey Ranganui

Tracey is our operations co-ordinator and can assist you with scheduling / operations.



Hayley Rees (Central)

Hayley is our Operations Co-Ordinator for the South Island and a long time veteran of Safety 'n Action and can assist you with scheduling / operations.

Operations / Logistics



Casey Gerber

Casey is our operations Co-Ordinator for North Island and can assist you with operations/logistics.

Product Team



Trish Stephenson

Trish is one of our Instructional Designer and Company Moderator, assisting with course material and moderation.



Regan Duff

Regan is one of our Instructional Designers, assisting with the creation of our assessments / training material



Margaret McCann

Margaret is one of our Instructional Designers, assisting with the creation of our assessments / training material



Greg Matten

Greg is one of our Instructional Designer and Company Moderator, assisting with course material and moderation.

Our Fierce Leaders!



Sussan Turner

Sussan is our CEO and the oracle of all. Sussan is available to assist with anything you may need.



Nicola Teal

Nic is our Sales and Marketing Director, and available to assist with all your needs!



Wendy Marsland

Wendy is our Commercial and Operations Director, and can also assist with accounts and CRM queries



Nicholas Matzopoulos

Nick is our National Training Manager and can assist with training and/or trainer queries.



Shelly Matzopoulos

Shelly is our Operations and Product Manager, and can assist with product, scheduling and trainer queries



Nick Hyde

Nick is assisting Safety from Aspire 2 Group, as the commercial partnerships & Performance Director, and can assist you with policy queries



Marie Willis

Marie works across the whole of Aspire 2 Group as Group Marketing Director, and can assist with any marketing queries



Sussan's EA



Clare Brown

Clare is Sussan's EA and is available to assist with any group queries as well as assistance with slotting into Sussan's diary.